



9th POSTGRADUATE
**Lymphoma
Conference**

The Copernican revolution on the basis of the TRIANGLE study

Martin Dreyling

LMU Hospital

Florence,
March 20-21, 2025

Hotel Brunelleschi

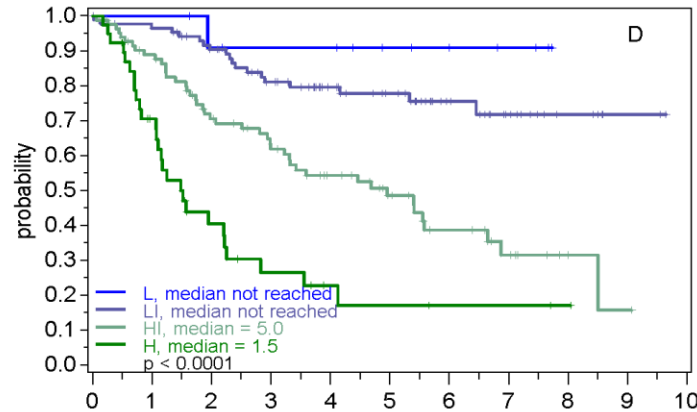
President:
P.L. Zinzani

- **Clinical/biological risk profile**
- **First line: chemotherapy standards**
- **targeted approaches**

Combined MIPI-c

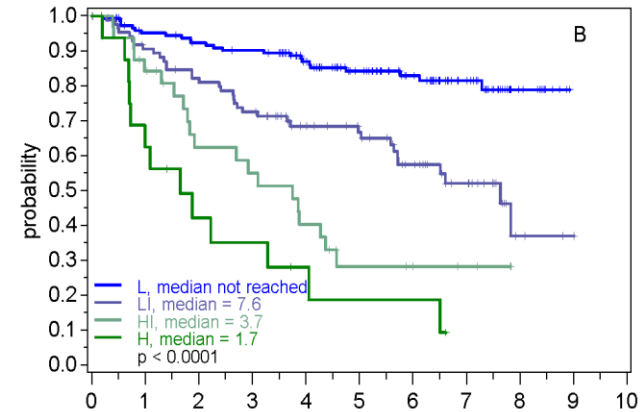
Overall survival

Patients >65 years



	Numbers At Risk										
	0	1	2	3	4	5	6	7	8	9	10
L	12	10	9	6	4	3	0				
LI	88	82	72	58	37	21	13	6	2		
HI	83	70	52	42	32	22	14	8	2	1	
H	39	24	12	7	4	3	2	1	0		

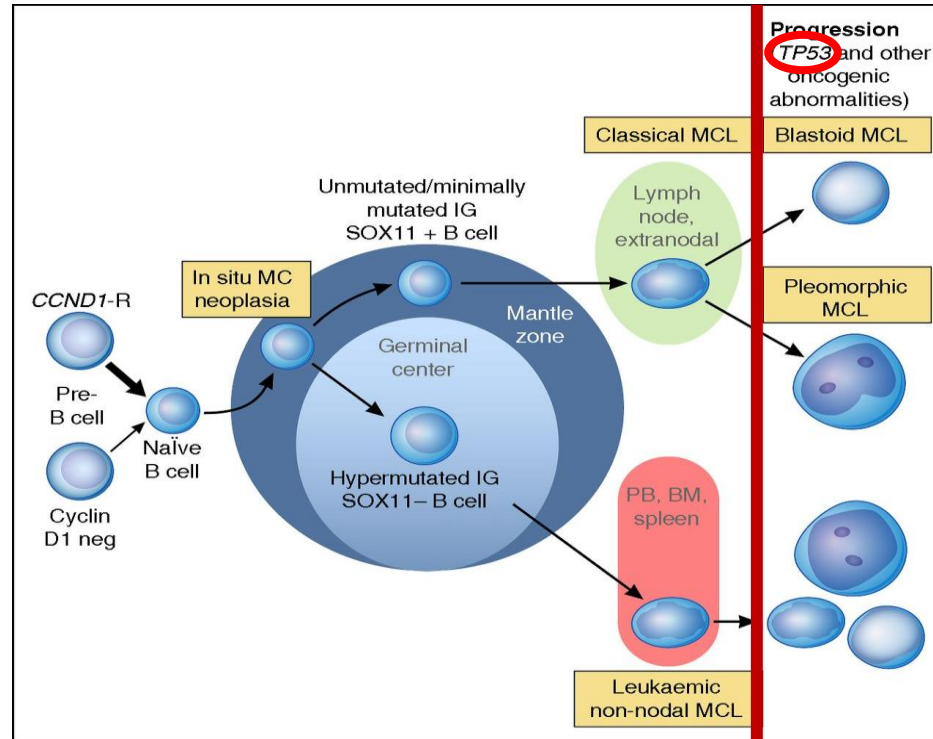
Patients <65 years



	Numbers At Risk										
	0	1	2	3	4	5	6	7	8	9	10
L	150	135	129	125	101	80	61	37	11	0	
LI	87	76	67	60	45	39	27	17	3	0	
HI	33	26	17	15	11	6	4	3	0		
H	16	10	6	5	3	2	0	0			

Mantle cell lymphoma

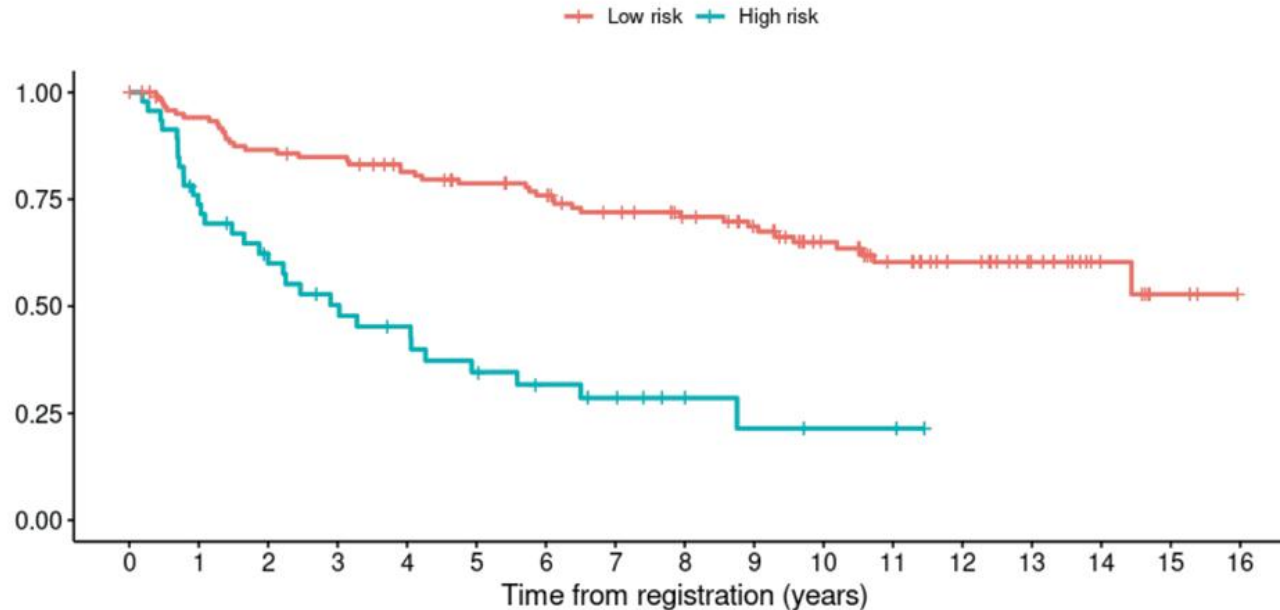
Spectrum of disease



Dreyling, Ann Oncol 2017

High risk Mantle cell lymphoma (young patients)

Overall survival (n=465)



Number at risk

Low risk	125	112	103	100	92	86	81	72	65	58	45	35	27	18	8	3	0
High risk	46	33	25	20	17	13	10	8	5	3	2	2	0	0	0	0	0
	0	1	2	3	4	5	6	7	8	9	10	11	12	13	14	15	16

Time from registration (years)

- **Clinical/biological risk profile**
- **chemotherapy standards in first line**
- **targeted approaches**

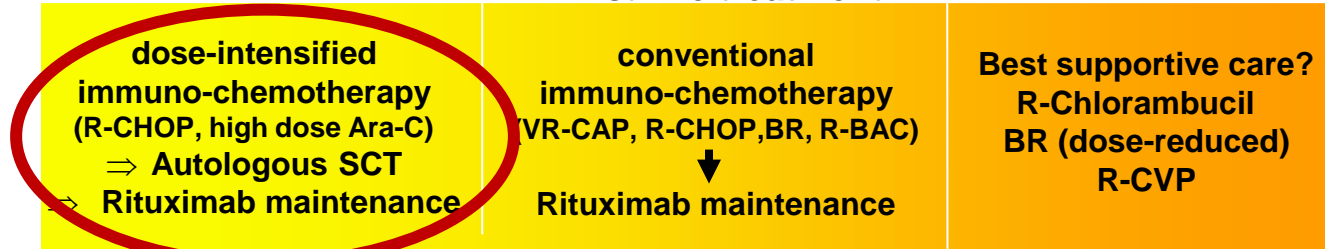
Mantle cell lymphoma

Therapeutic algorithm

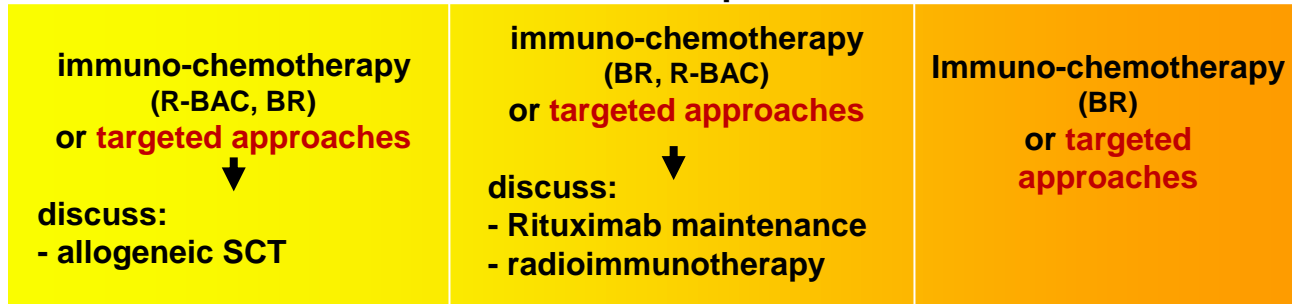
young patient (≤ 65)

elderly patient (>65)
First line treatment

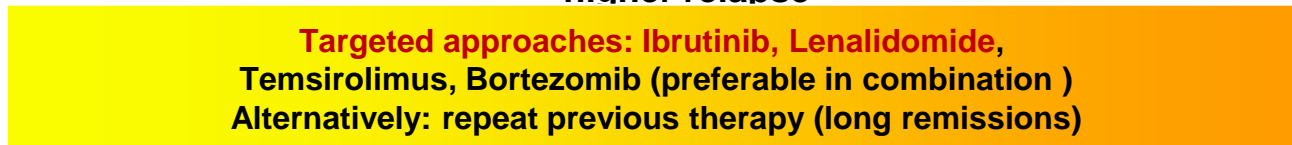
compromised patient



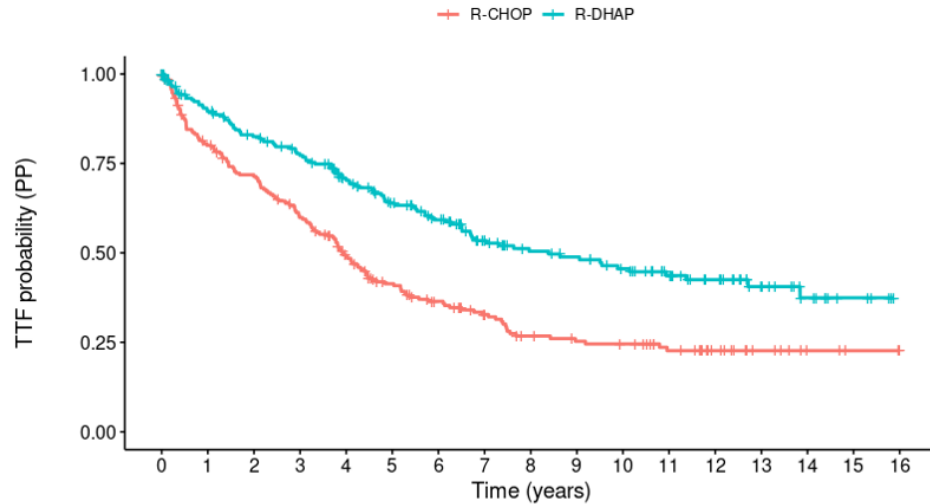
1. relapse



higher relapse



Updated Results 2021 – TTF (PP)



Number at risk

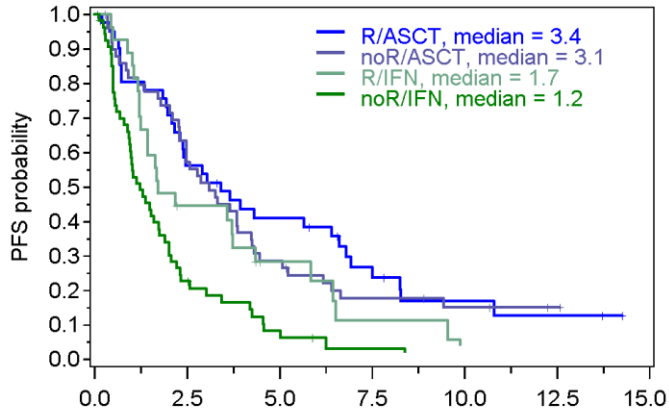
	0	1	2	3	4	5	6	7	8	9	10	11	12	13	14	15	16
R-CHOP	234	178	156	129	100	77	62	50	38	34	32	24	16	9	4	2	1
R-DHAP	232	194	175	160	135	115	100	77	65	61	53	42	32	19	11	5	0

Time (years)

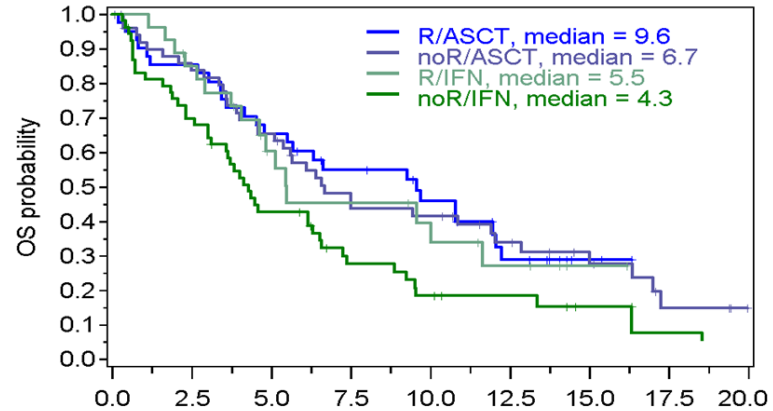
- Median follow-up 10.6 years
- Median TTF:
R-CHOP 3.9 years
R-DHAP 8.4 years
- 10-year TTF (95% CI):
R-CHOP 25% (19% - 32%)
R-DHAP 46% (39% - 54%)
- Overrunning analysis (adjusted for interim analyses):
Hazard ratio 0.59 (p=0.038)

Mantle cell lymphoma

Autologous SCT (first line)



	Numbers At Risk							
	0.0	2.5	5.0	7.5	10.0	12.5	15.0	
R/ASCT	41	23	16	9	4	3		
noR/ASCT	52	28	14	6	6	4		
R/IFN	27	11	5	2	0			
noR/IFN	54	12	4	1	0			



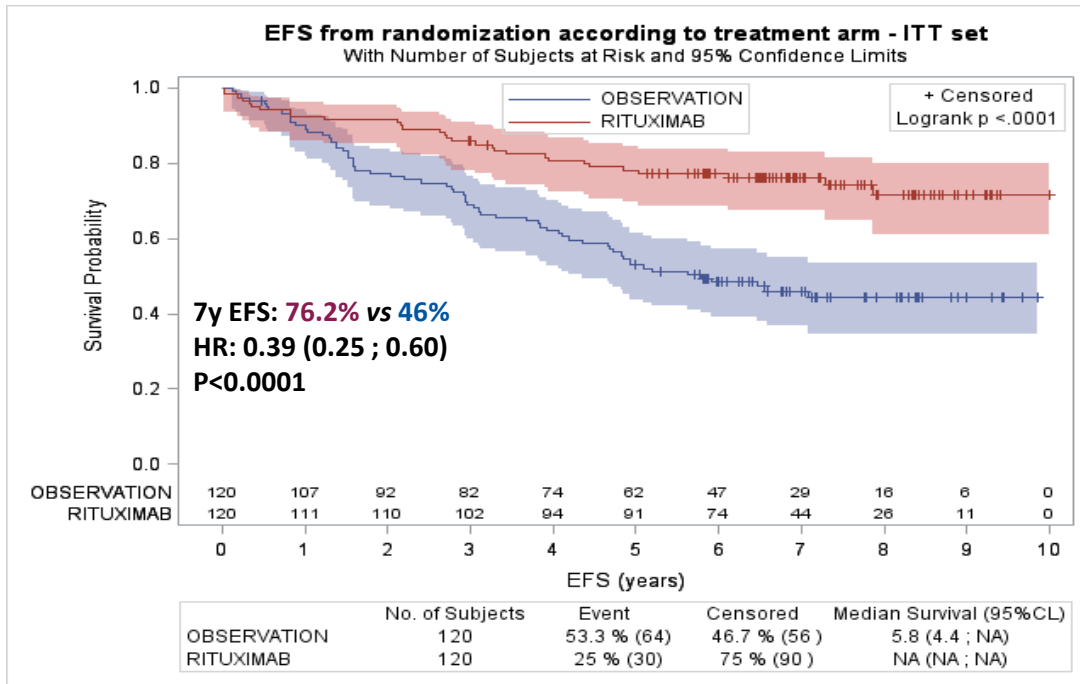
	Numbers At Risk								
	0.0	2.5	5.0	7.5	10.0	12.5	15.0	17.5	20.0
R/ASCT	41	35	26	20	15	8	2	0	
noR/ASCT	52	41	32	22	19	13	8	3	
R/IFN	27	22	12	9	7	4	1	0	
noR/IFN	54	37	22	12	8	6	3	1	

EFS from randomization



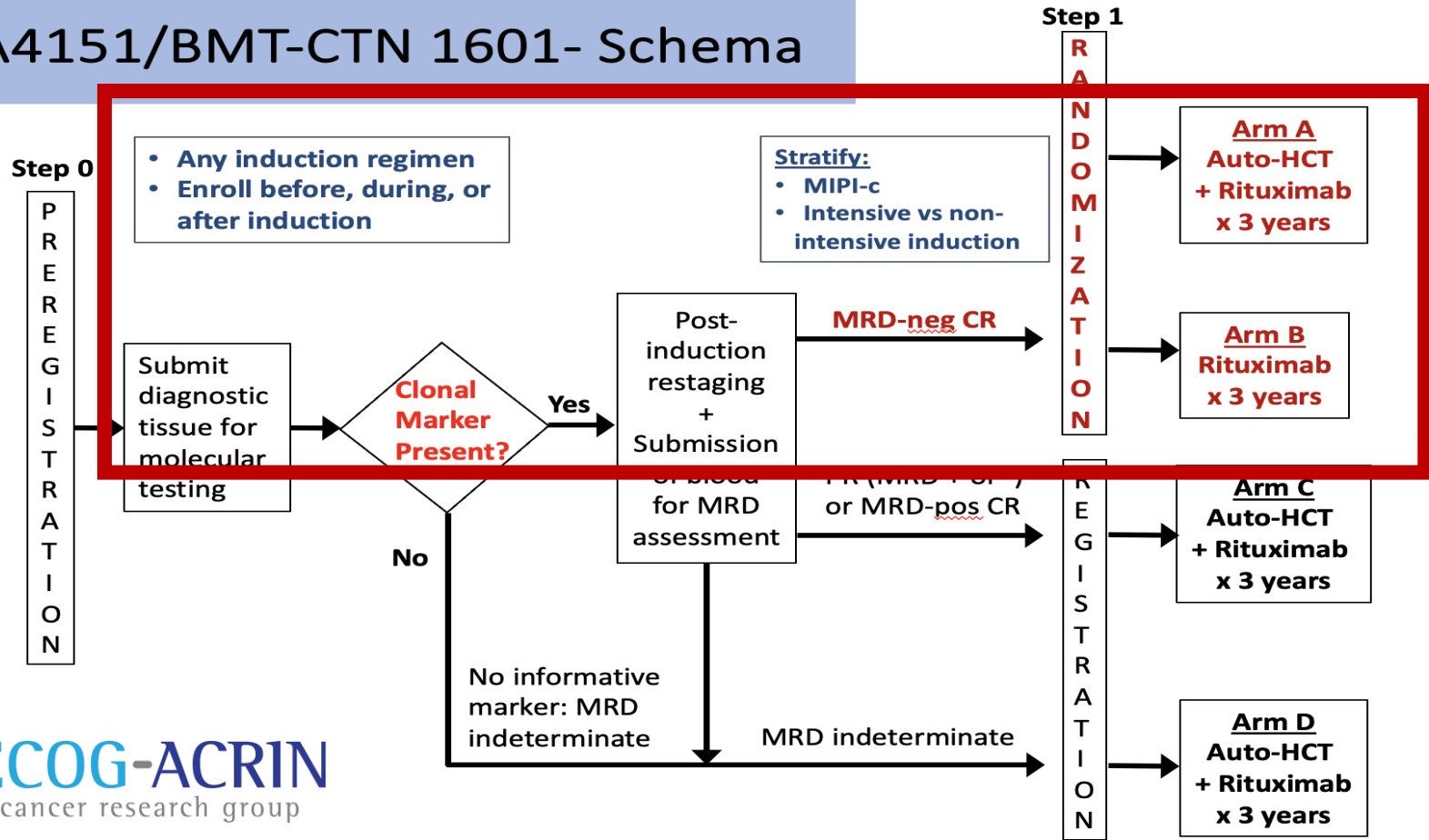
Median FU for living patients:

- from inclusion: 7.5 y (95% CI 7.4-7.7)
- from randomization: 7 y (95% CI 6.8-7.2)



Nature of first Event	Observation, N=64/120 (53%)	Rituximab N=30/120 (25%)
Relapse	51 (80%)	19 (63%)
Death w/o relapse	9 (14%)	6 (20%)
Serious infections	4 (6%)	4 (13%)
Life threatening allergy to R	0	1 (4%)

EA4151/BMT-CTN 1601- Schema

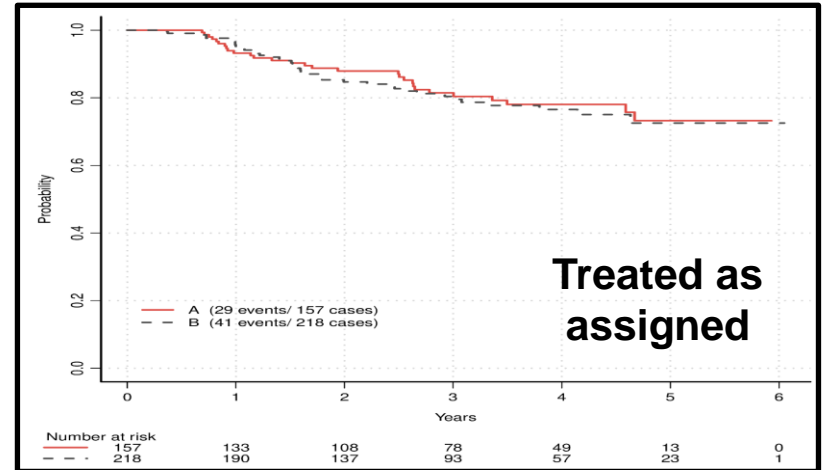
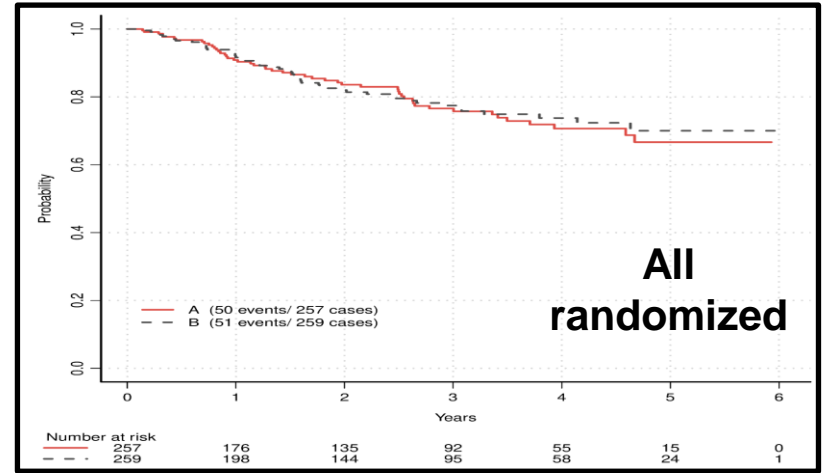


Patient Characteristics

Variable		Arm A (AutoHCT) N=257	Arm B (no AutoHCT) N=259	Arm C (MRD+) N=49	Arm D (MRD indet) N=85	Total N=650
Age	Median Range	59 (28-71)	61 (27-70)	60 (33-70)	60 (41-70)	60 (27-71)
Sex	Male	81%	77%	76%	82%	79%
	Female	19%	23%	24%	18%	21%
Race	White	92%	92%	87%	96%	92%
	Black	5%	5%	11%	1%	5%
Elev LDH		66%	66%	36%	32%	34%
MIPI-c	High/Hi-int	33%	37%	42%	42%	37%
	Low/Low-int	67%	63%	58%	58%	63%
Intensive induction	Yes	74%	74%	69%	68%	73%
	No	26%	26%	31%	32%	27%
BTK-i	Induction	7.4%	7.7%	6.1%	5.9%	7.2%
	Maintenance	0	0.4%	2.0%	0	0.3%

PFS – Arms A & B

- The estimated PFS HR for Arm A vs B in all randomized (n=516) and pts treated as assigned (n=375) were 1.05 (CI 0.71-1.56, p=0.79) and 0.95 (CI 0.59-1.54, p=0.84), respectively.
- The 3 year PFS for Arms A and B were 76.6% and 77.4% in all randomized pts, and 81.5% and 80.4% in pts treated as assigned.

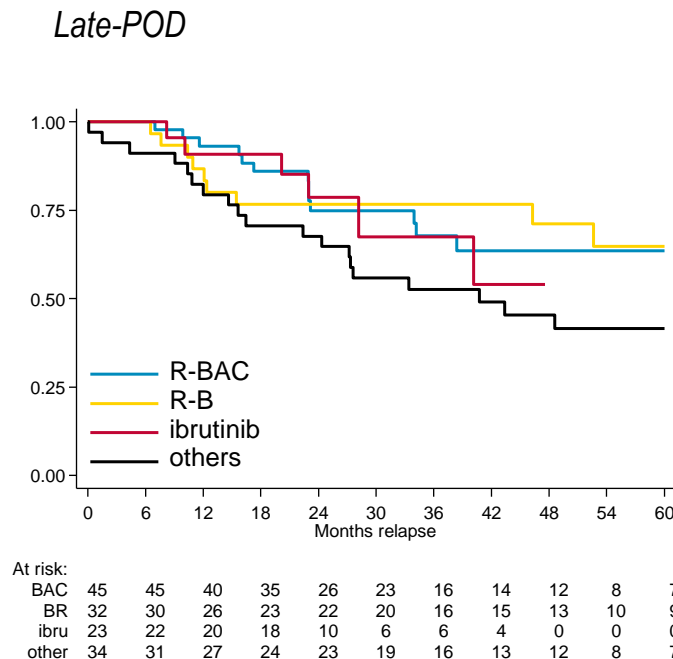
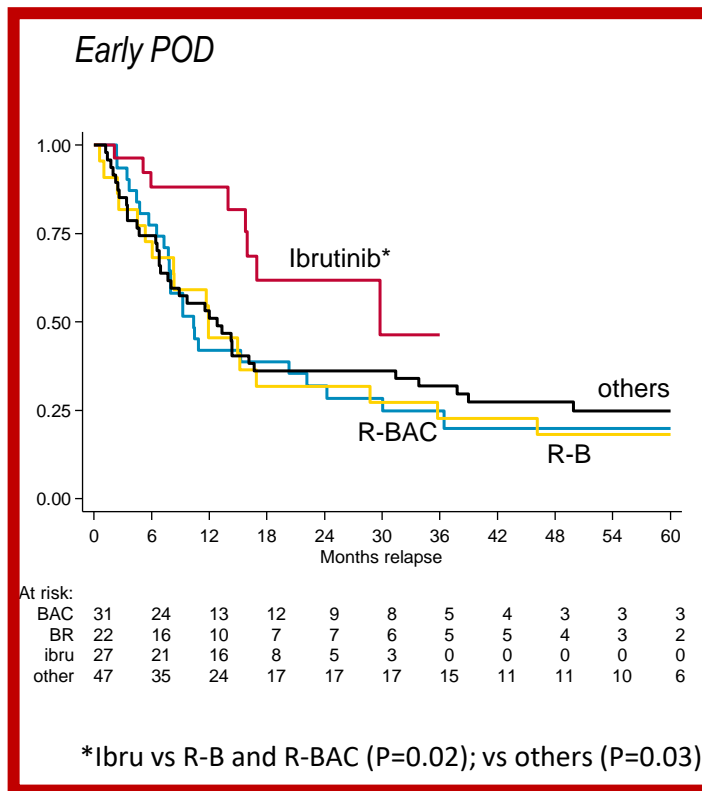


- **Clinical/biological risk profile**
- **chemotherapy standards in first line ?**
- **targeted approaches**



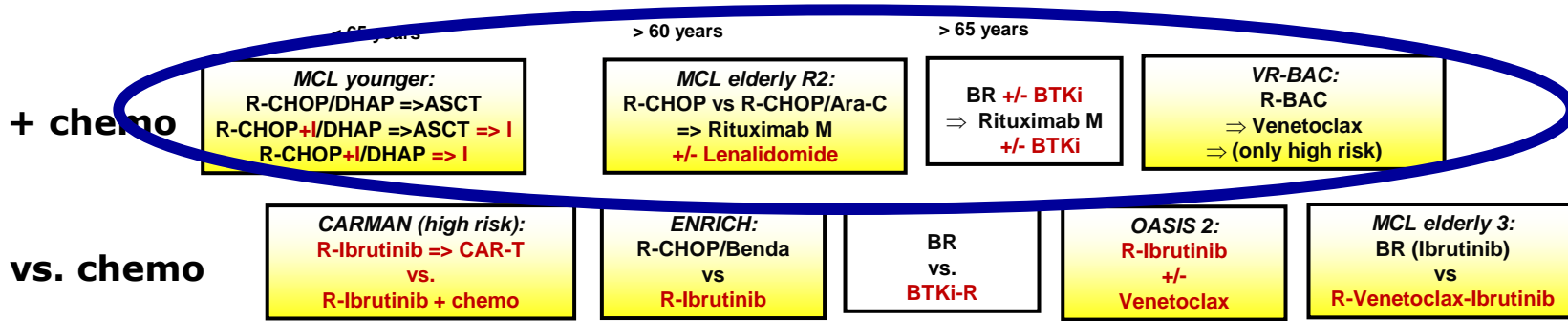
Ibrutinib in relapsed MCL (POD 24)

Overall survival

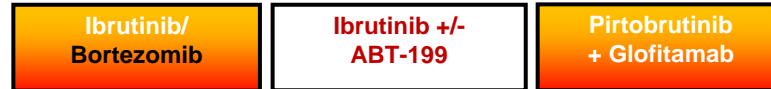


European MCL Network

Study generation 2025



Relapse



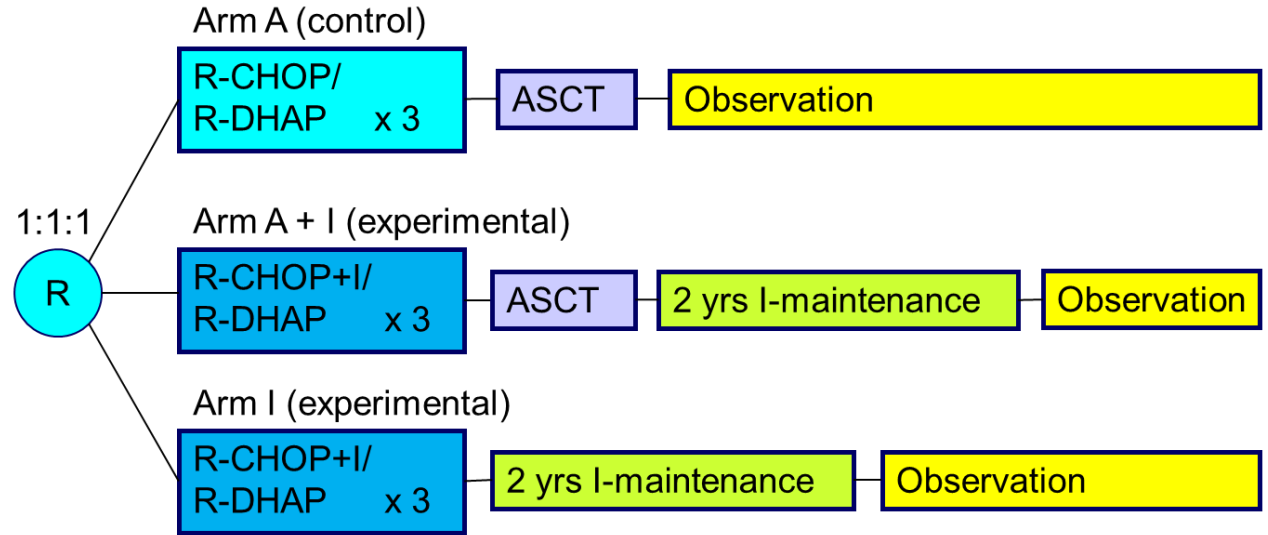


TRIANGLE: Trial Design

- MCL patients
- previously untreated
- stage II-IV
- younger than 66 years
- suitable for HA and ASCT
- ECOG 0-2

- Primary outcome: FFS

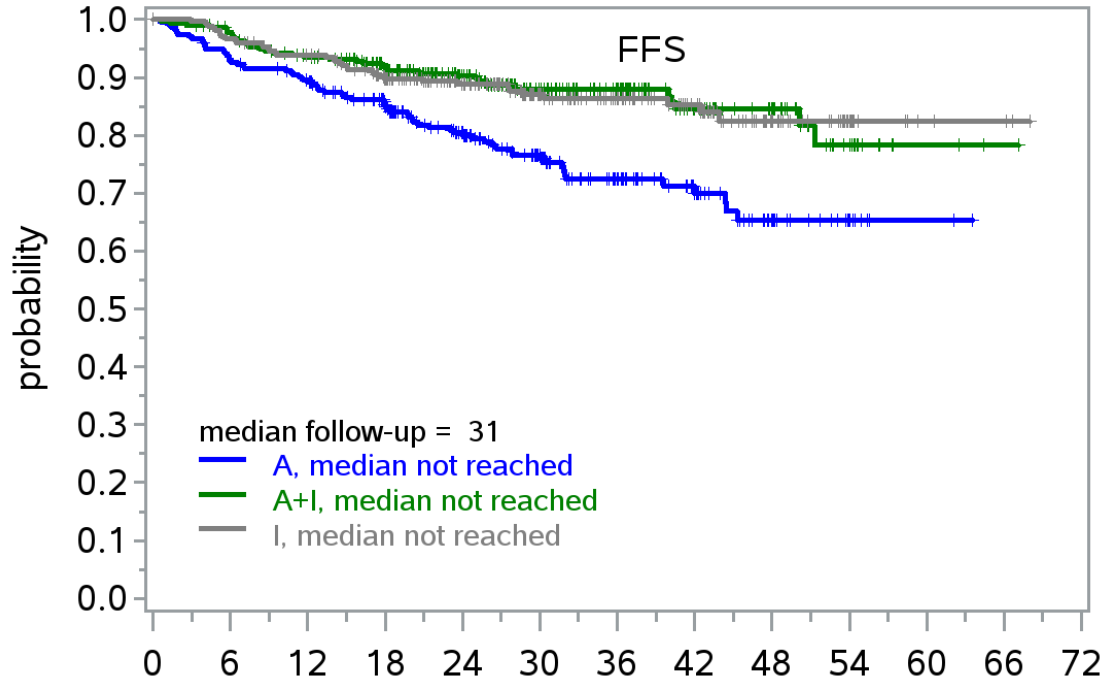
- Secondary outcomes:
 - Response rates
 - PFS, RD
 - OS
 - Safety



- R maintenance was added following national guidelines in all 3 trial arms
- Rituximab maintenance (without or with Ibrutinib) was started in 168 (58 %)/165 (57 %)/158 (54 %) of A/A+I/I randomized patients.



TRIANGLE: FFS Superiority of A+I vs. I ?



■ Test A+I vs. I ongoing, no decision yet

Next lymphoma treatment (among patients with first treatment failure)	A (n=68)		A+I (n=35)		I (n=37)	
Treatment with Ibrutinib	34	79%	4	24%	3	11%
Treatment without Ibrutinib	9	21%	13	76%	24	89%
No treatment	25		18		10	

	Numbers At Risk											
	months from randomisation											
A	288	252	237	206	162	126	85	54	27	12	2	0
A+I	292	270	253	226	184	137	109	65	40	17	3	1
I	290	269	257	229	180	133	100	68	34	16	4	3



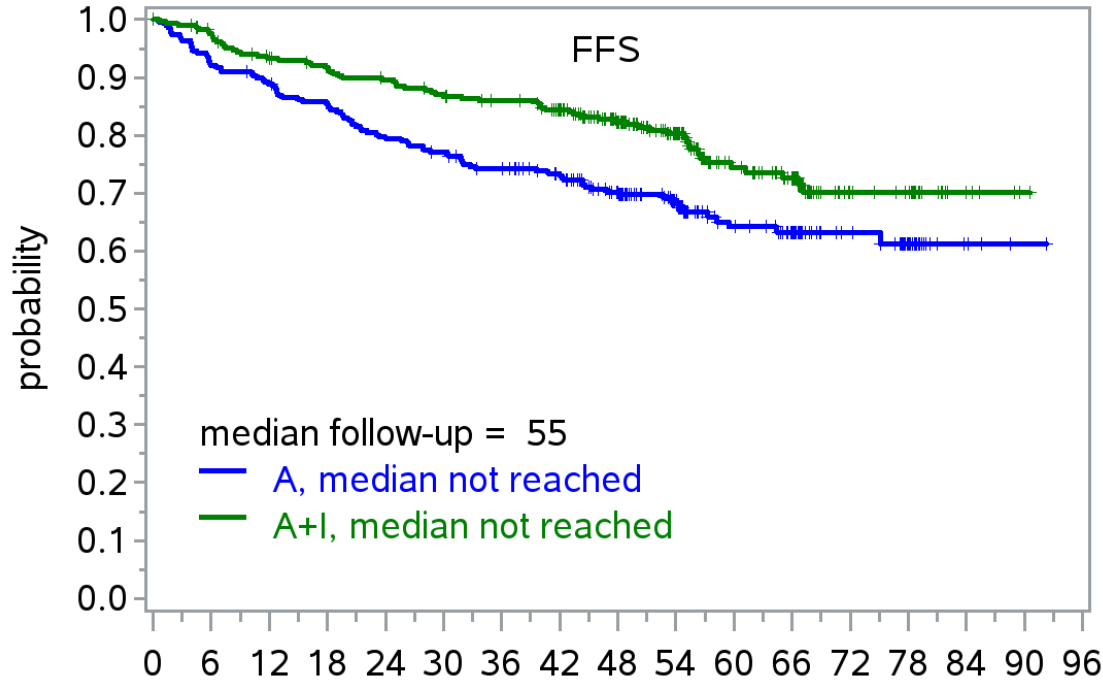
Mantle cell lymphoma ASH 2022

Open questions

- **longer follow-up (from 31 to 55 months)**
- **significance of OS ?**
- **R maintenance in the era of ibrutinib containing regimens ?**
- **ASCT in the era of ibrutinib containing regimens ?**



TRIANGLE: FFS Superiority of A+I vs. A



■ Superiority of A+I vs. A

■ 4-year FFS A+I: 82%

■ 4-year FFS A: 70%

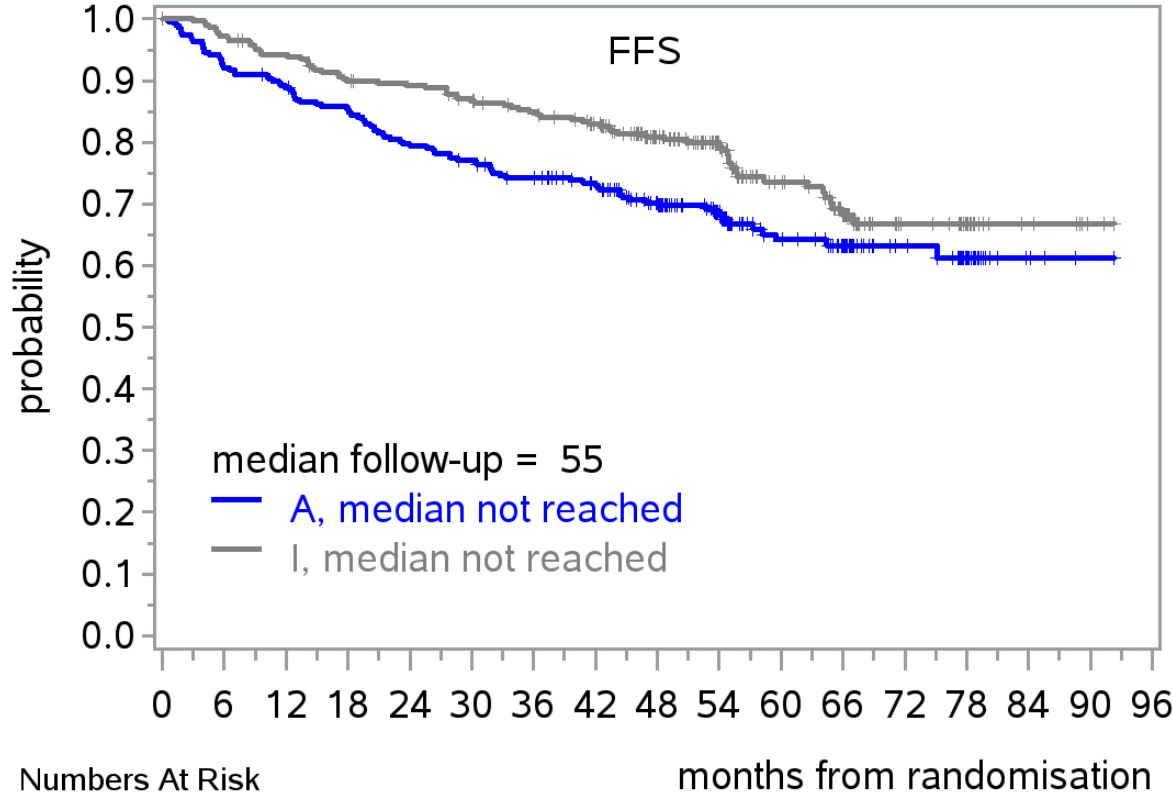
■ p-value (overrunning, one-sided):
p=0.0026

■ HR (A+I vs. A): HR=0.64

	Numbers At Risk																
	months from randomisation																
A	288	255	245	235	219	211	200	187	158	121	74	57	32	20	4	1	0
A+I	292	274	259	252	245	236	230	217	180	141	89	70	28	24	6	2	0

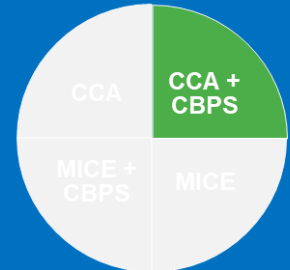


TRIANGLE: No FFS Superiority of A vs. I

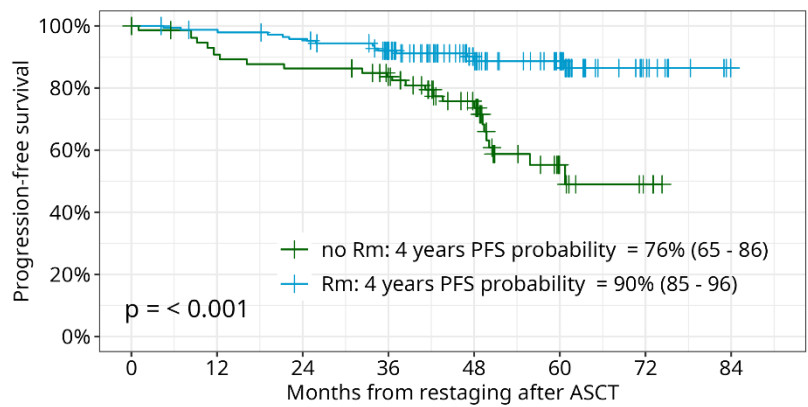


- Superiority of A vs. I rejected
- 4-year FFS A: 70%
(MCL Younger: 70%)
- 4-year FFS I: 81%
- p-value (overrunning, one-sided):
 $p=0.9890$
- HR (A vs. I): HR=1.29
- Superiority of I
(two-sided, retrospective)
 $p=0.0208$

Primary endpoint: Progression-free survival Weighted Kaplan-Meier curves*

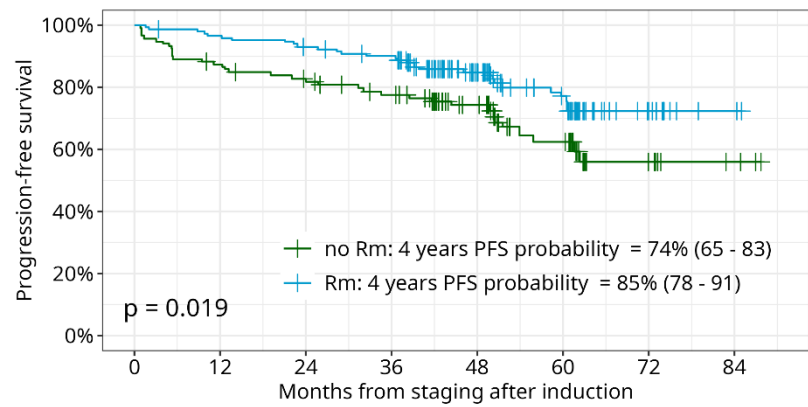


Arm A+I: PFS



noRm group									
At risk	85.3	75.1	71.6	63.8	41	12.9	6	0	
Event	0	8.1	11.5	13.5	19.5	28.7	29.7	29.7	
Rm group									
At risk	151.8	146.9	142.1	125.8	85.7	63	24.5	0	
Event	0	3.1	6.9	12.8	14.6	15.5	16.6	16.6	

Arm I: PFS

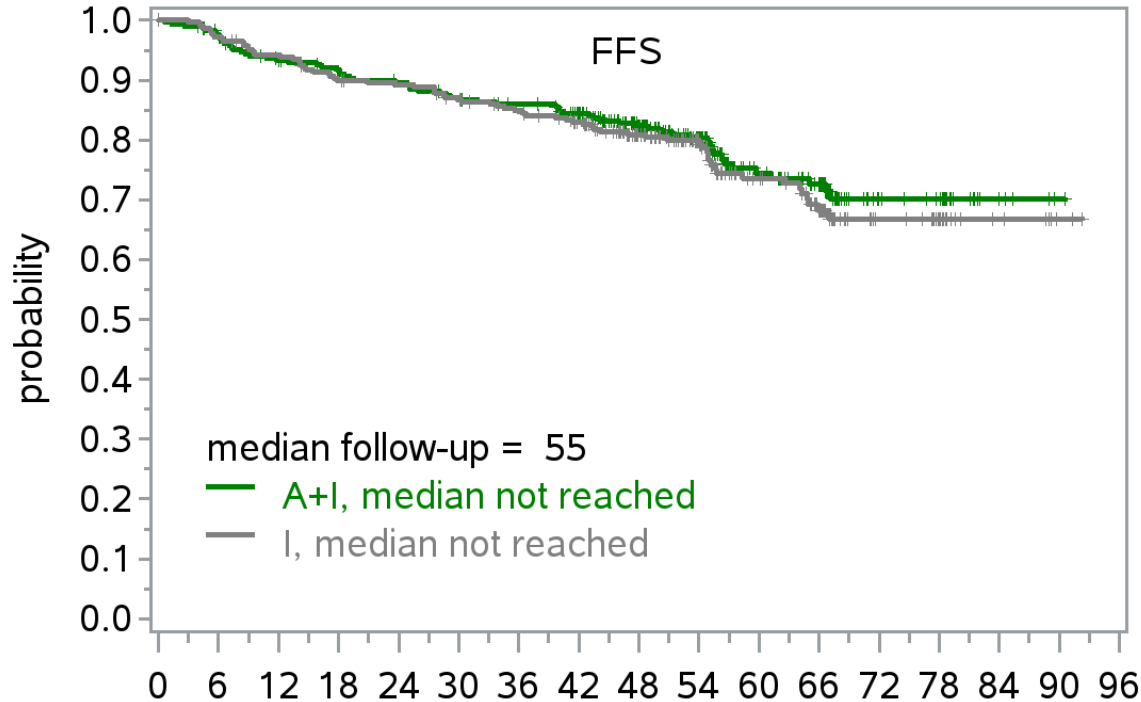


noRm group									
At risk	116.7	100.7	92.5	82.6	59.8	38.2	19.3	6	
Event	0	14.1	20.2	26.2	29.2	35.8	37.7	37.7	
Rm group									
At risk	157.2	148.3	141.5	135.3	87.3	57.9	23	3.9	
Event	0	7	12.8	16.9	22.8	28.7	30.6	30.6	

*Propensity Score including MIPI single variables, response after induction (arm I)/ after ASCT (arm A, A+I), Ki67, cytology



TRIANGLE: FFS Superiority of A+I vs. I ?



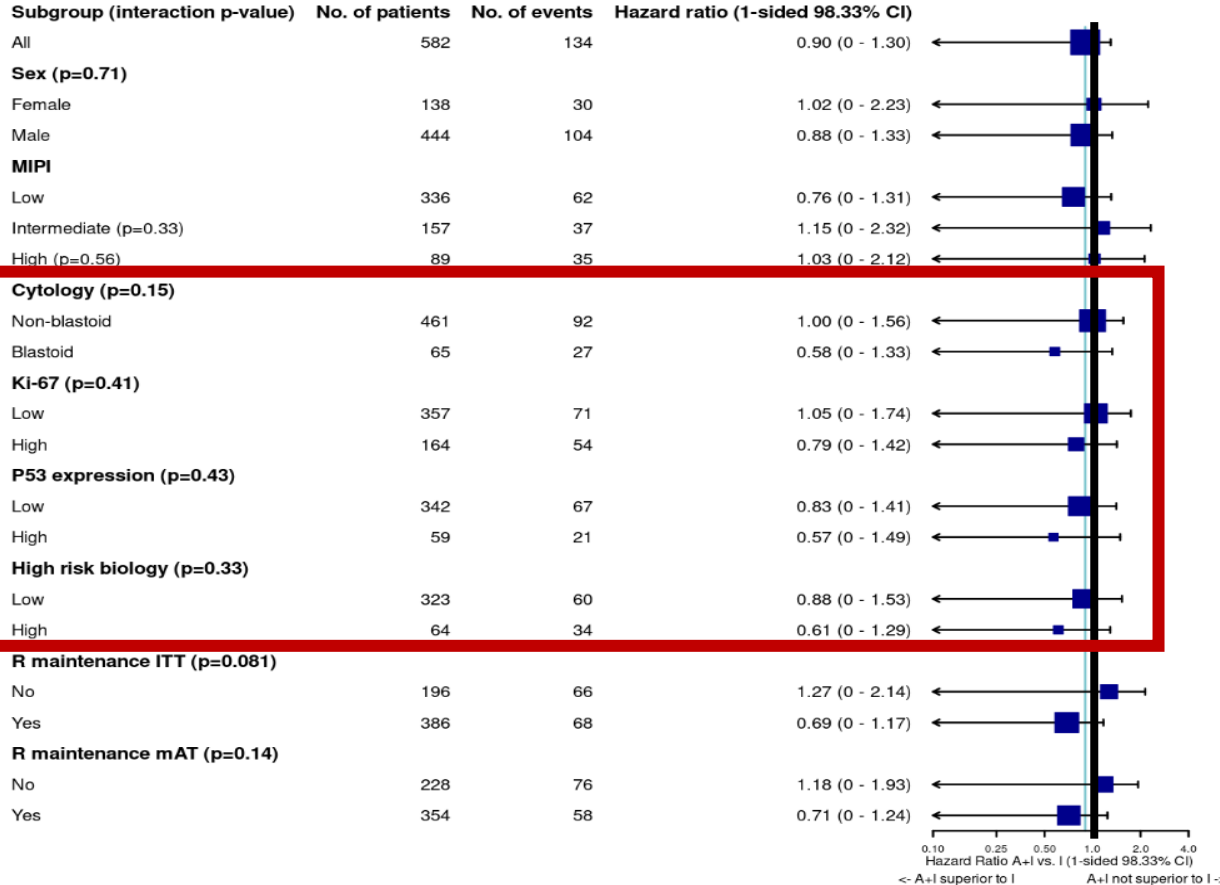
- Superiority of A+I vs. I rejected
- 4-year FFS A+I: 82%
- 4-year FFS I: 81%
- p-value (overrunning, one-sided):
p=0.21
- HR (A+I vs. I): HR=0.83

Numbers At Risk

	0	6	12	18	24	30	36	42	48	54	60	66	72	78	84	90	96
A+I	292	274	259	252	245	236	230	217	180	141	89	70	28	24	6	2	0
I	290	273	263	250	246	237	228	213	167	129	89	67	31	20	7	2	0



TRIANGLE: No FFS Superiority of A+I vs. I

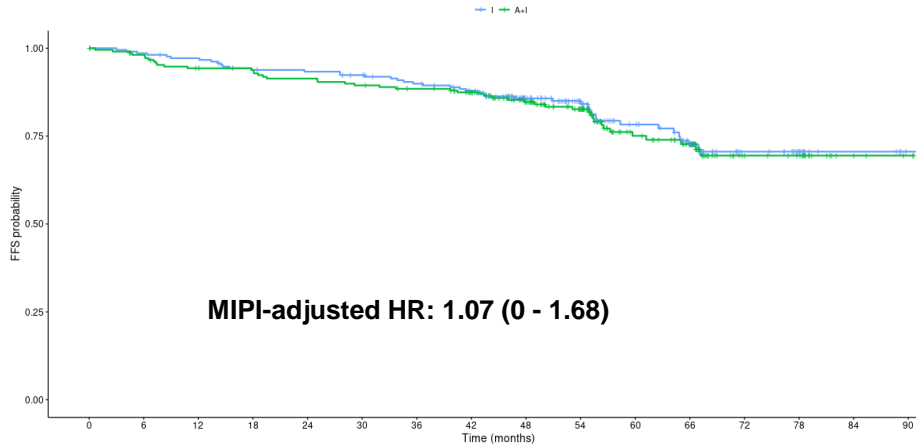


- trend towards superiority of A+I over I in patients in high risk patients:
 - Ki-67 >30%
 - blastoid cytology or
 - high p53 expression



TRIANGLE: A+I vs. I (FFS) and Ki-67 (50% cut-off)

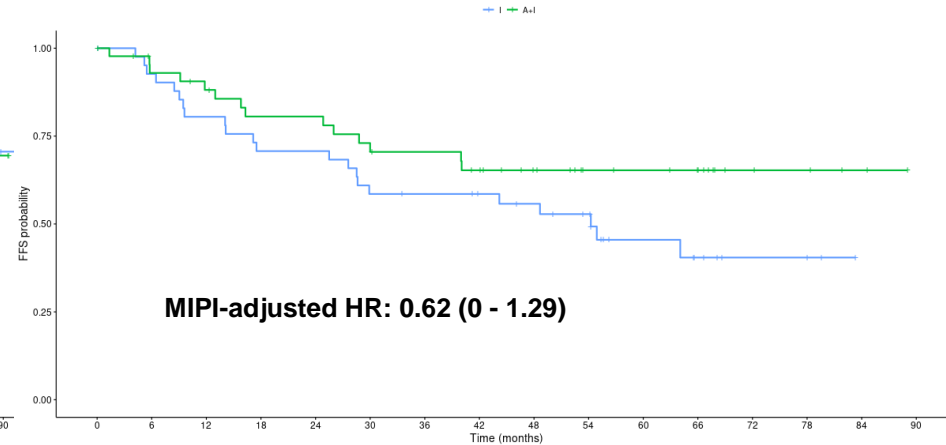
Ki-67: Low (<50%)



Number at risk (number censored)

Time (months)	0	6	12	18	24	30	36	42	48	54	60	66	72	78	84	90
I	217 (0)	208 (6)	204 (7)	196 (8)	194 (9)	190 (11)	182 (14)	171 (21)	128 (60)	98 (89)	72 (108)	56 (119)	23 (151)	14 (160)	6 (168)	2 (172)
A+I	216 (0)	206 (6)	196 (8)	193 (10)	188 (10)	184 (10)	179 (13)	169 (21)	140 (45)	111 (71)	68 (106)	55 (117)	23 (147)	20 (150)	4 (166)	2 (166)

Ki-67: High (>=50%)



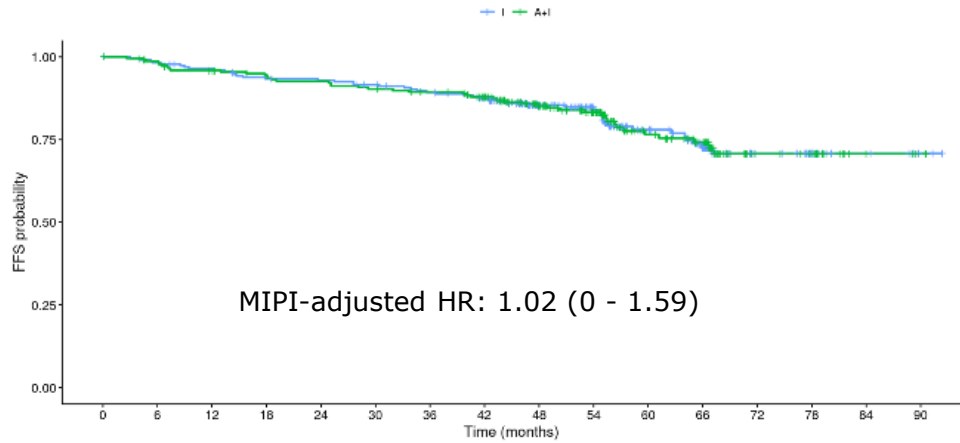
Number at risk (number censored)

Time (months)	0	6	12	18	24	30	36	42	48	54	60	66	72	78	84	90
I	42 (0)	38 (1)	33 (1)	29 (1)	29 (1)	24 (1)	23 (2)	21 (4)	19 (5)	16 (7)	9 (12)	6 (14)	3 (17)	2 (18)	0 (20)	0 (20)
A+I	46 (0)	39 (4)	36 (5)	32 (6)	32 (6)	28 (6)	27 (7)	24 (8)	19 (13)	14 (18)	13 (19)	11 (21)	5 (27)	4 (28)	2 (30)	0 (32)



TRIANGLE: A+I vs. I (FFS) and blastoid variant

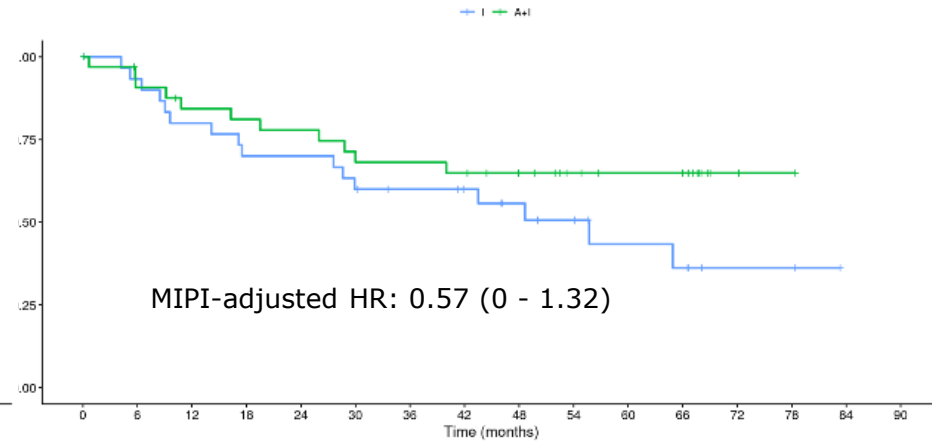
Cytology: Non-blastoid



Number at risk (number censored)

Time (months)	0	6	12	18	24	30	36	42	48	54	60	66	72	78	84	90
I	234 (0)	224 (6)	218 (8)	210 (9)	208 (10)	203 (12)	196 (14)	185 (21)	142 (60)	110 (91)	77 (116)	58 (130)	27 (160)	17 (170)	7 (180)	2 (185)
A+I	227 (0)	216 (8)	208 (10)	202 (13)	198 (13)	193 (13)	188 (16)	176 (25)	144 (52)	113 (80)	69 (117)	54 (130)	22 (160)	19 (163)	4 (178)	2 (180)

Cytology: Blastoid



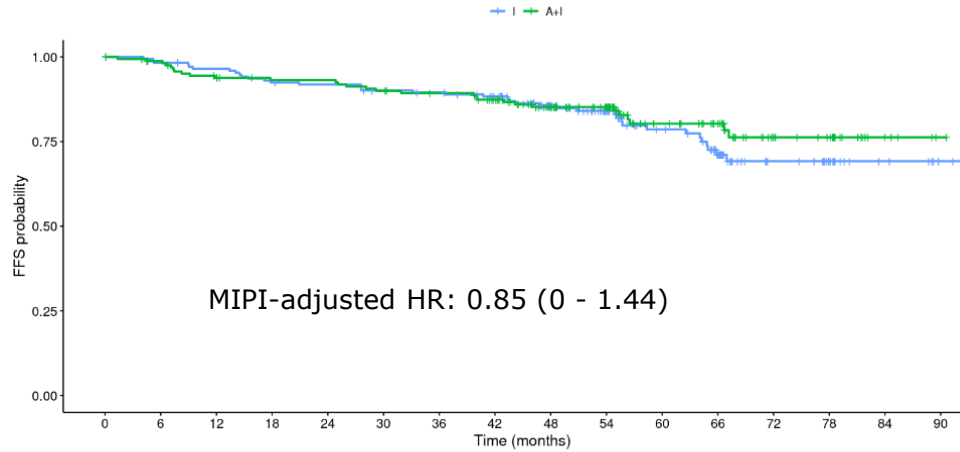
Number at risk (number censored)

Time (months)	0	6	12	18	24	30	36	42	48	54	60	66	72	78	84	90
I	31 (0)	28 (1)	24 (1)	21 (1)	21 (1)	18 (1)	16 (3)	14 (5)	11 (7)	9 (8)	6 (10)	5 (10)	2 (13)	2 (13)	0 (15)	0 (15)
A+I	34 (0)	29 (2)	26 (3)	25 (3)	24 (3)	21 (3)	21 (3)	20 (3)	17 (6)	13 (10)	11 (12)	10 (13)	2 (21)	1 (22)	0 (23)	0 (23)

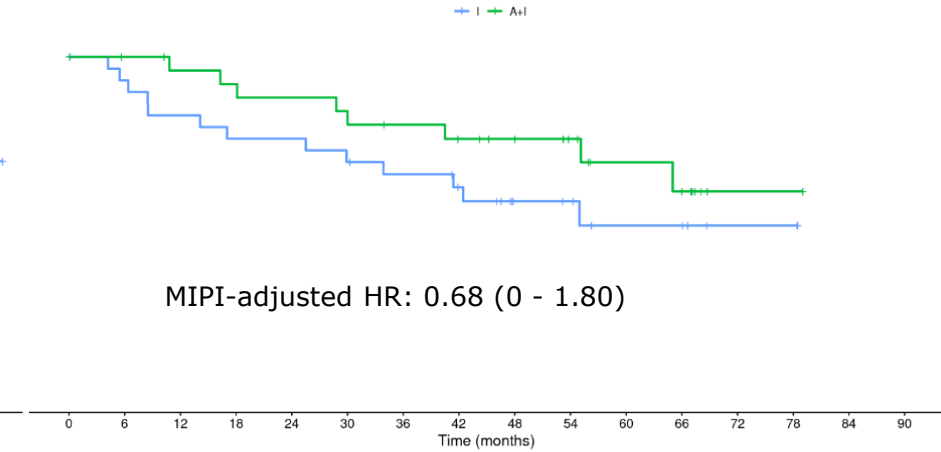


TRIANGLE: A+I vs. I (FFS) and p53 high expression

p53: Low (<=50%)



p53: High (>50%)



Number at risk (number censored)

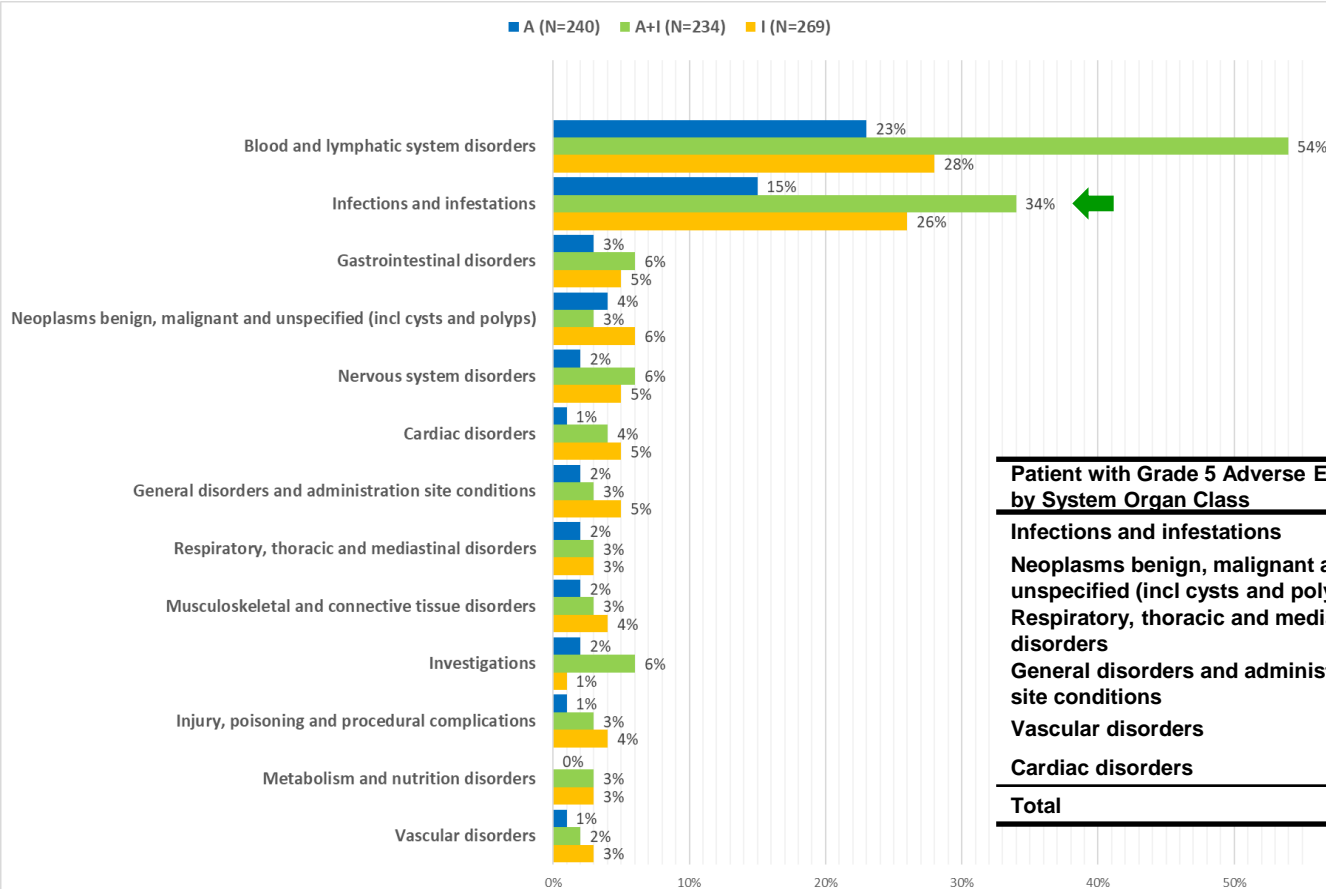
Time (months)	0	6	12	18	24	30	36	42	48	54	60	66	72	78	84	90
I	175 (0)	170 (2)	166 (3)	159 (3)	157 (4)	152 (6)	150 (7)	141 (14)	113 (38)	90 (59)	67 (77)	49 (89)	25 (112)	16 (121)	7 (130)	2 (135)
A+I	167 (0)	160 (5)	150 (7)	146 (10)	146 (10)	141 (10)	137 (13)	128 (19)	107 (37)	87 (57)	57 (83)	47 (93)	23 (115)	19 (119)	5 (133)	1 (137)

Number at risk (number censored)

Time (months)	0	6	12	18	24	30	36	42	48	54	60	66	72	78	84	90
I	31 (0)	27 (2)	24 (2)	22 (2)	22 (2)	20 (2)	18 (3)	15 (5)	10 (9)	9 (10)	6 (12)	6 (12)	2 (16)	2 (16)	0 (18)	0 (18)
A+I	28 (0)	26 (2)	24 (3)	23 (3)	22 (3)	20 (3)	19 (4)	17 (5)	15 (7)	12 (10)	8 (13)	7 (13)	1 (19)	1 (19)	0 (20)	0 (20)



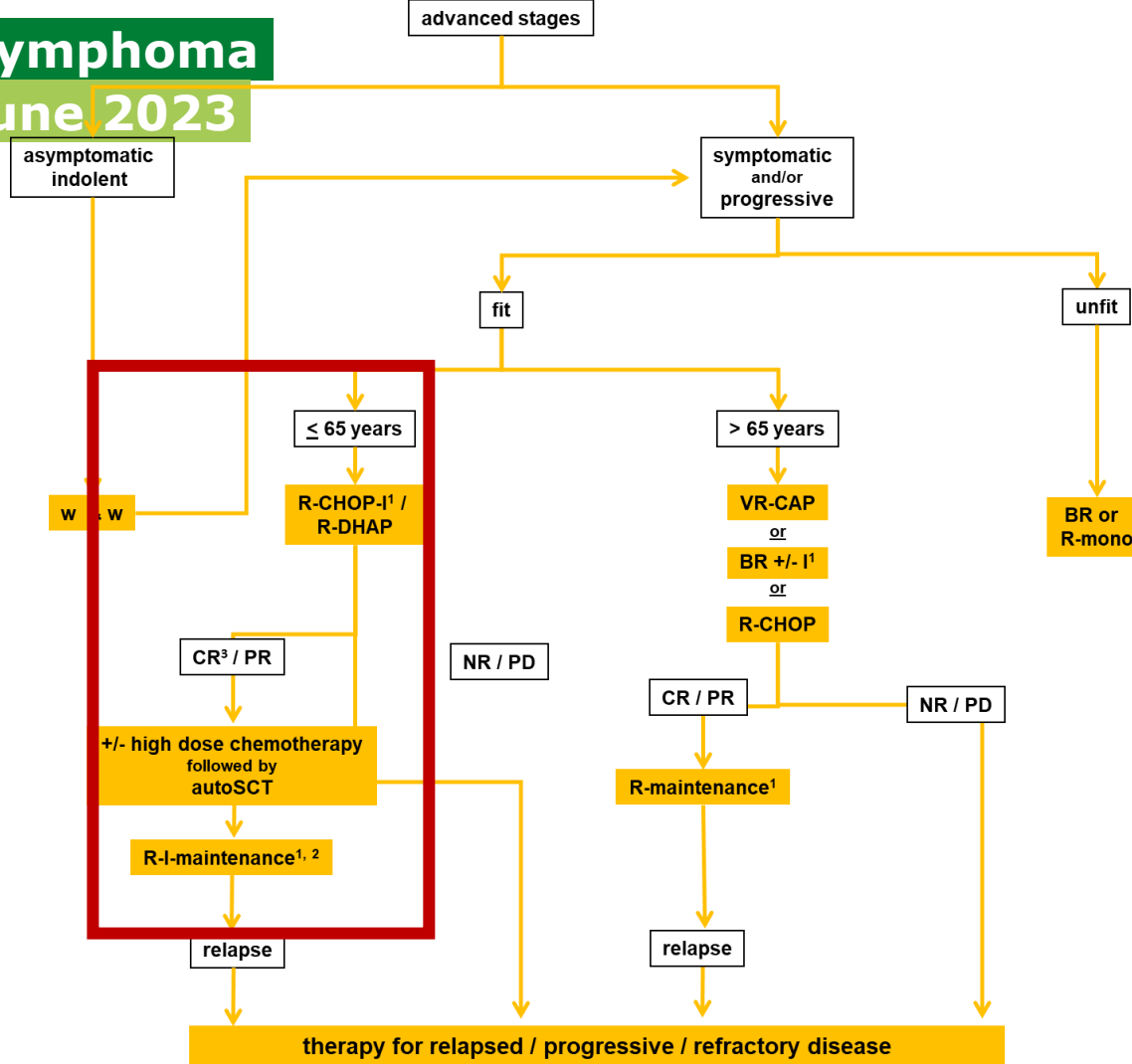
TRIANGLE: Grade ≥ 3 AEs (maintenance/follow-up)



Patient with Grade 5 Adverse Events by System Organ Class	A (N=240)		A+I (N=234)		I (N=269)	
Infections and infestations	5	2%	4	2%	5	2%
Neoplasms benign, malignant and unspecified (incl cysts and polyps)	5	2%	3	1%	2	1%
Respiratory, thoracic and mediastinal disorders	0	0%	0	0%	2	1%
General disorders and administration site conditions	0	0%	0	0%	1	0%
Vascular disorders	1	0%	0	0%	0	0%
Cardiac disorders	0	0%	0	0%	1	0%
Total	11	5%	7	3%	11	4%

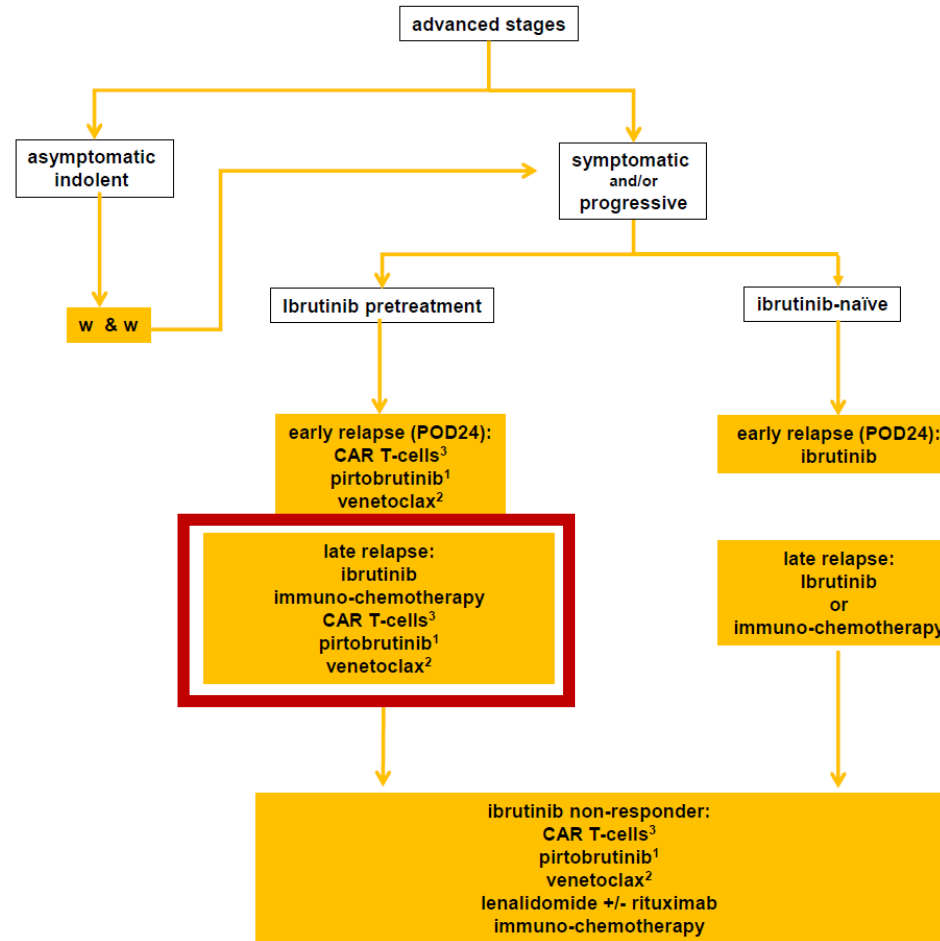
Mantle cell Lymphoma

Onkopedia June 2023



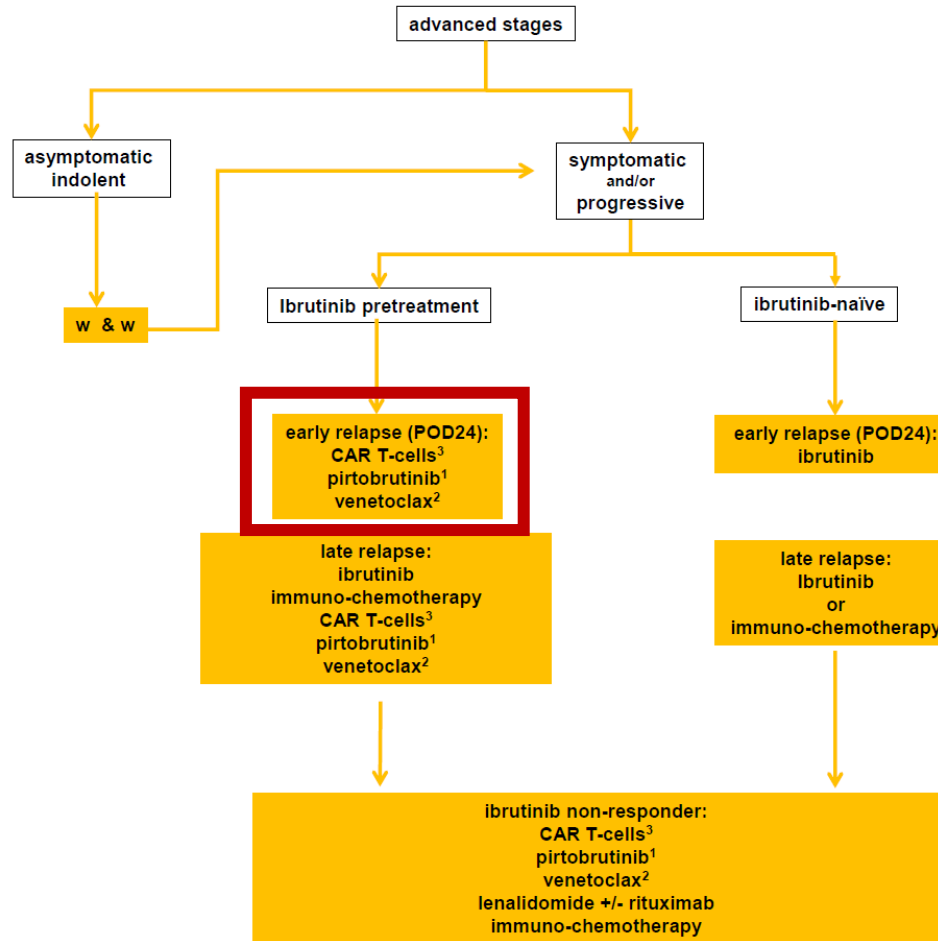
Relapsed Mantle cell Lymphoma

Onkopedia 2023



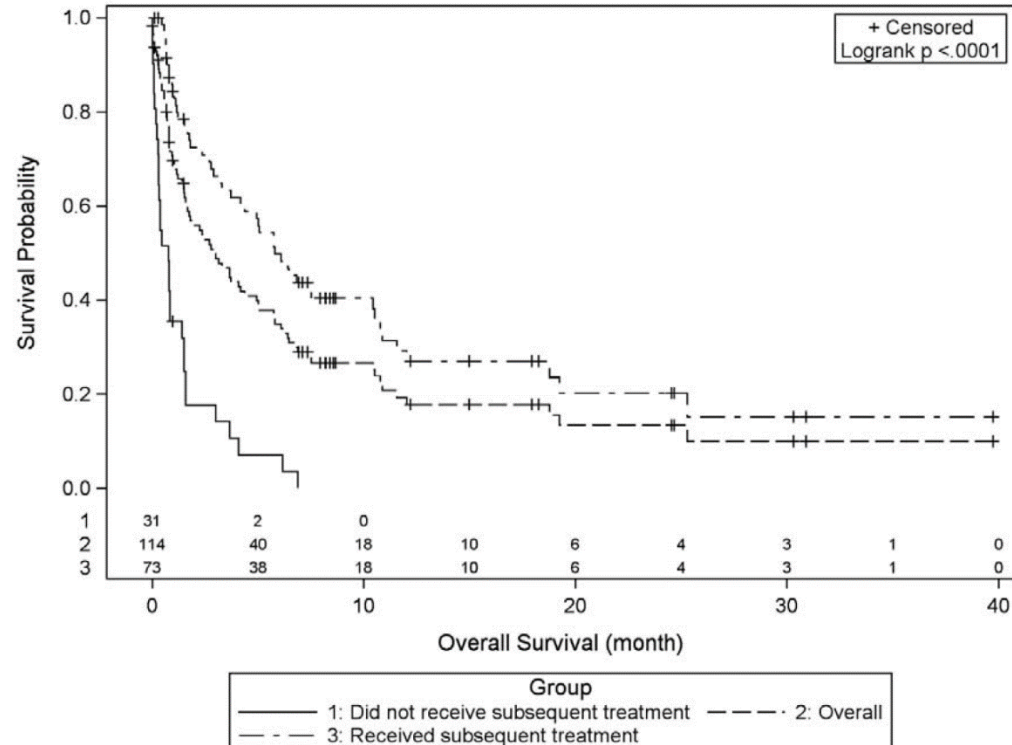
Relapsed Mantle cell Lymphoma

Onkopedia 2023



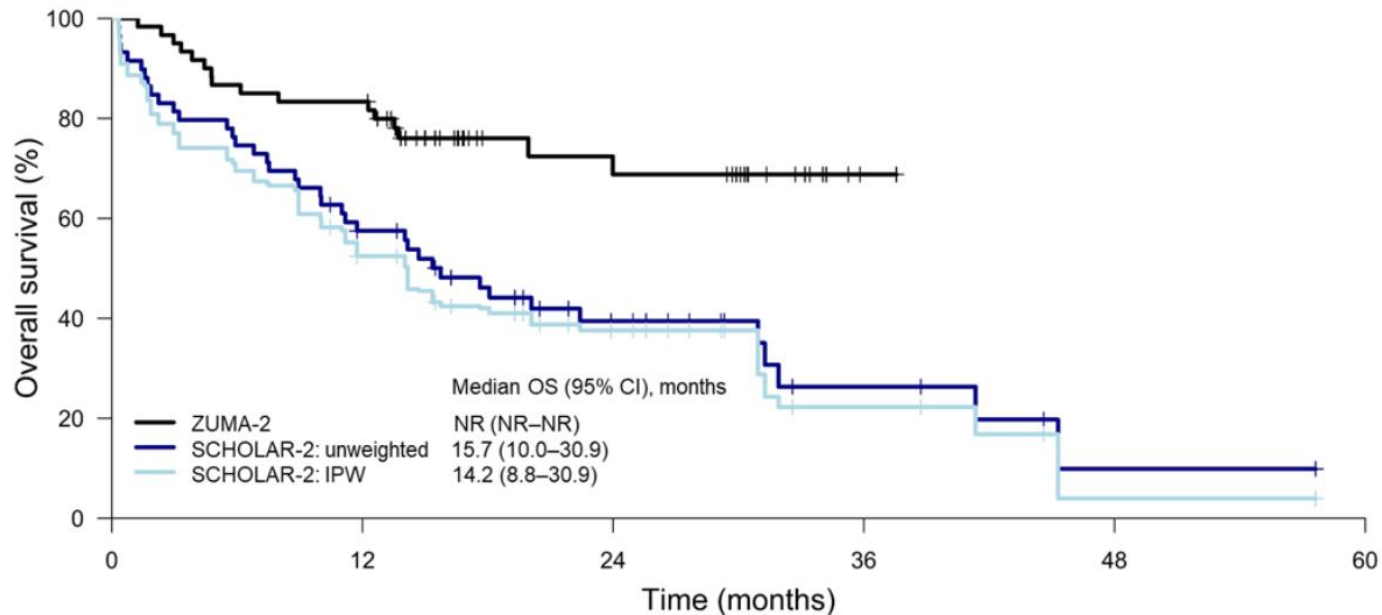
Relapsed mantle cell lymphoma

Failure under ibrutinib



Georg Hess¹, Martin Dreyling², Lucie Oberic³, Eva Gine⁴, Pier Luigi Zinzani⁵, Kim Linton⁶, Adam Vilmar⁷, Mats Jerkeman⁸, Jenny MH Chen⁹, Anke Ohler¹, Stephan Stilgenbauer¹⁰, Catherine Thieblemont¹¹, Jonathan Lambert¹², Vittorio Ruggiero Zilioli¹³, Juan Manuel Sanchos¹⁴, Ana Jimenez Ubieto¹⁵, Luca Fischer¹⁶, Sam Keeping¹⁷, Julie E Park¹⁸, Gregory A. Maglinte¹⁹, Liliosa Nyamutswa²⁰, Rubina Siddiqui²¹, John Reitan²², Sally Wade²³, Gilles Salles²⁴

¹ Department of Hematology, Hematology and Hemostatology, Comprehensive Cancer Center, University Medical School of the Johannes Kepler University Linz, Austria; ² Hematology, Medizinische Hochschule, Hannover, Germany; ³ Hematology, University of Medicine, Lodz, Poland; ⁴ Hematology, Hospital General de Castellón, Castellón de la Plana, Spain; ⁵ Hematology, Hospital General de Castellón, Castellón de la Plana, Spain; ⁶ Hematology, Hospital General de Castellón, Castellón de la Plana, Spain; ⁷ Hematology, Hospital General de Castellón, Castellón de la Plana, Spain; ⁸ Hematology, Hospital General de Castellón, Castellón de la Plana, Spain; ⁹ Hematology, Hospital General de Castellón, Castellón de la Plana, Spain; ¹⁰ Hematology, Hospital General de Castellón, Castellón de la Plana, Spain; ¹¹ Hematology, Hospital General de Castellón, Castellón de la Plana, Spain; ¹² Hematology, Hospital General de Castellón, Castellón de la Plana, Spain; ¹³ Hematology, Hospital General de Castellón, Castellón de la Plana, Spain; ¹⁴ Hematology, Hospital General de Castellón, Castellón de la Plana, Spain; ¹⁵ Hematology, Hospital General de Castellón, Castellón de la Plana, Spain; ¹⁶ Hematology, Hospital General de Castellón, Castellón de la Plana, Spain; ¹⁷ Hematology, Hospital General de Castellón, Castellón de la Plana, Spain; ¹⁸ Hematology, Hospital General de Castellón, Castellón de la Plana, Spain; ¹⁹ Hematology, Hospital General de Castellón, Castellón de la Plana, Spain; ²⁰ Hematology, Hospital General de Castellón, Castellón de la Plana, Spain; ²¹ Hematology, Hospital General de Castellón, Castellón de la Plana, Spain; ²² Hematology, Hospital General de Castellón, Castellón de la Plana, Spain; ²³ Hematology, Hospital General de Castellón, Castellón de la Plana, Spain; ²⁴ Hematology, Hospital General de Castellón, Castellón de la Plana, Spain

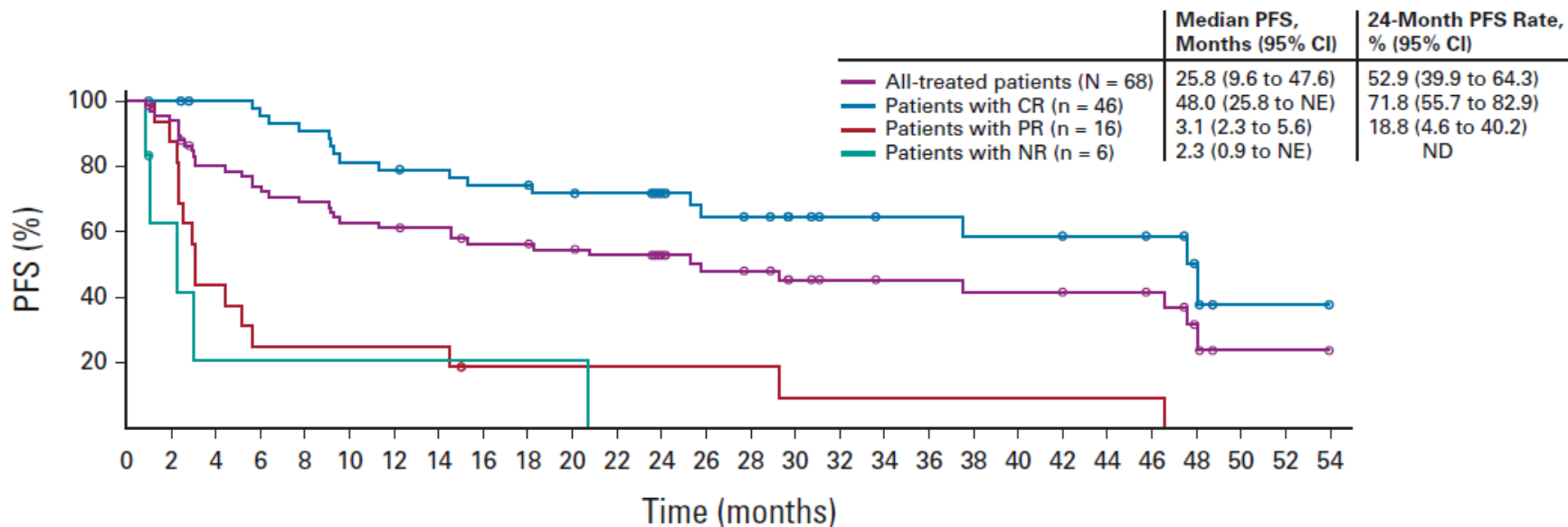


Number at risk
(number censored)

	0	12	24	36	48	60
ZUMA-2	60 (0)	50 (0)	19 (25)	1 (43)	0 (44)	0 (44)
SCHOLAR-2 (unweighted)	59 (0)	32 (2)	15 (10)	5 (17)	1 (19)	0 (20)
SCHOLAR-2 (IPW)	59 (0)	30 (1)	15 (8)	4 (16)	0 (18)	0 (19)

Relapsed Mantle cell Lymphoma (after BTKi)

CAR T-cells: Survival rates

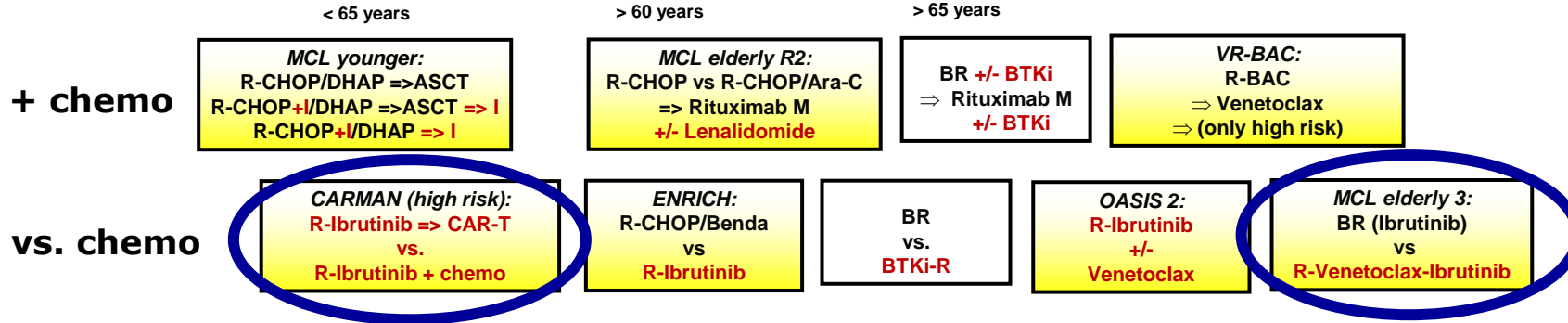


No. at risk:

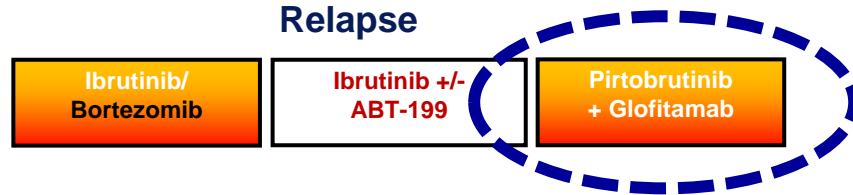
All-treated patients	68	62	51	47	44	40	39	38	34	34	32	30	24	20	19	15	13	12	12	11	11	10	10	9	4	1	1	0	
Patients with CR	46	45	43	42	39	35	34	33	31	31	29	28	22	18	17	14	12	11	11	10	10	9	9	8	4	1	1	0	
Patients with PR	16	14	7	4	4	4	4	4	2	2	2	2	2	2	2	1	1	1	1	1	1	1	1	1	1	0	0	0	0
Patients with NR	6	3	1	1	1	1	1	1	1	1	1	0	0	0	0	0	0	0	0	0	0	0	0	0	0	0	0	0	0

European MCL Network

Study generation 2025



Relapse



First line:

- **Younger patients:**
TRIANGLE (+ Ibrutinib) improves PFS and OS
+ ASCT in high risk patients (?)
- ***In studies: non-chemo BTK-combinations***
(high risk: + CAR-T cells?)



TRIANGLE: 25th annual meeting in Lisbon 2024

